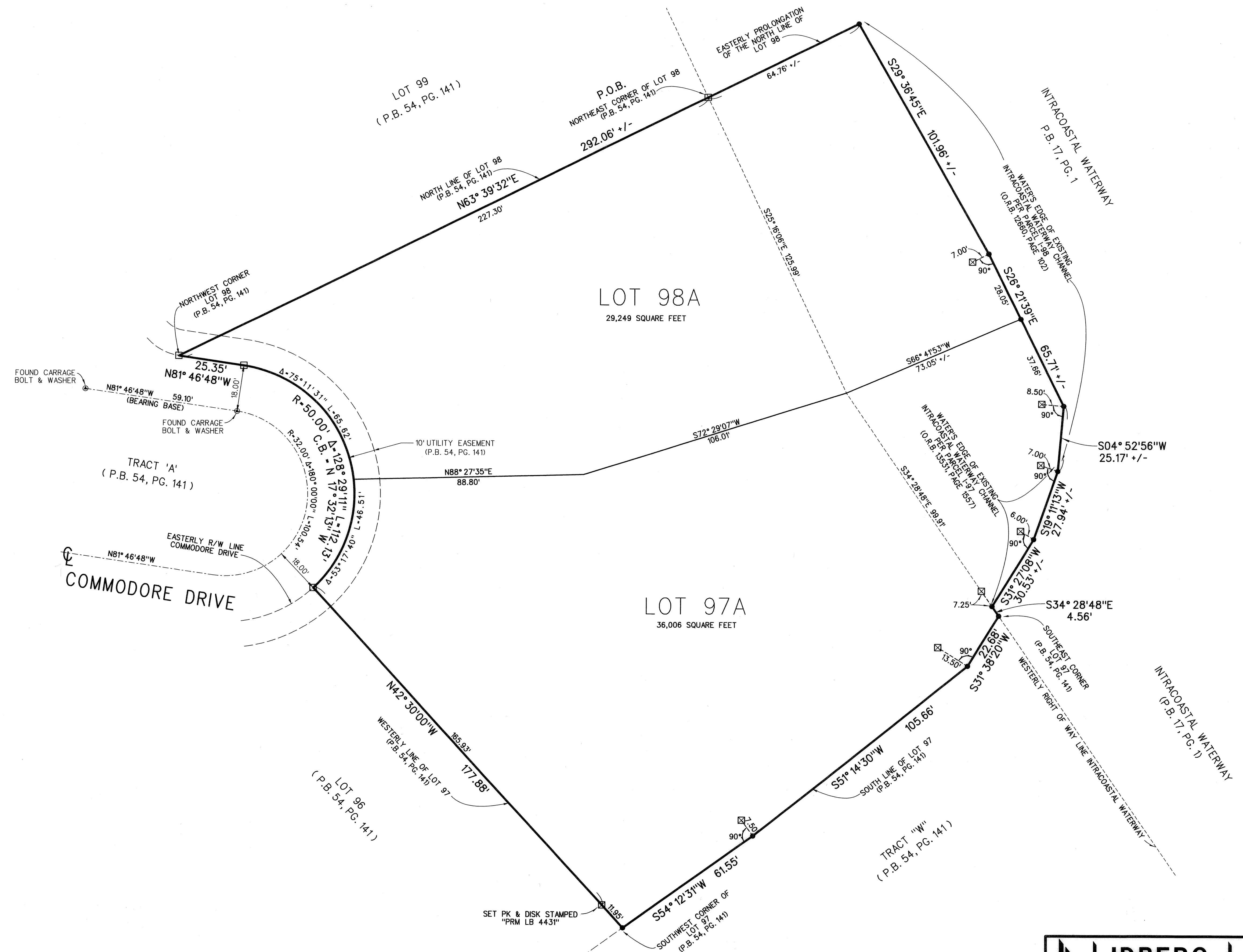
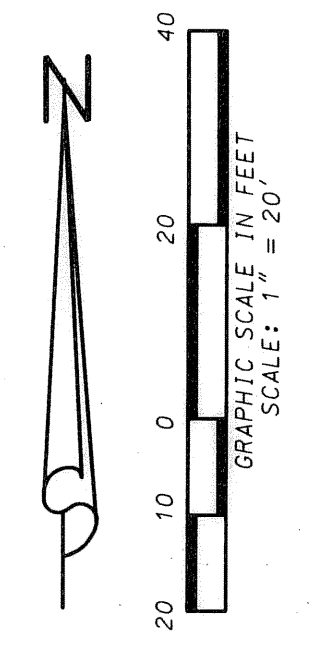


# SCARPA AT ADMIRAL'S COVE

BEING A REPLAT LOTS 97 & 98, ADMIRAL'S COVE, AS RECORDED IN PLAT BOOK 54, PAGES 141 THROUGH 151, NORTH PARCEL I-98, AS RECORDED IN OFFICIAL RECORD BOOK 12660, PAGE 102 AND NORTH PARCEL I-97, AS RECORDED IN OFFICIAL RECORD BOOK 13531, PAGE 1557, ALL IN THE PUBLIC RECORDS OF PALM BEACH COUNTY FLORIDA, LYING IN SECTION 18, TOWNSHIP 41 SOUTH, RANGE 43 EAST TOWN OF JUPITER, PALM BEACH COUNTY, FLORIDA

SHEET 2 OF 2 JULY 2004



**LIDBERG LAND SURVEYING, INC.**  
 675 West Indiantown Road, Suite 200,  
 Jupiter, Florida 33458 TEL. 561-746-8454

CAD: K:\UST\184143\54-141\1963306\1963306.DGN		
REF.		
FLD. -	FB. PG.	JOB 1963306
OFF. E.C.	-	DATE 05/04/04
CKD. D.C.L.	SHEET 2 OF 2	DWG. D03-196P